



# Greater North Texas Orchid Society

<http://www.gntos.org>

Volume 53—Issue 3

March 2007

## 2007 OFFICERS

Tom McIntosh  
PRESIDENT

Jim Williams  
VICE PRESIDENT

Jeane Staser  
SECRETARY

Kathy Halverson  
TREASURER

2006-2007

Emily Quinn  
2007-2008

Manuel Aybar  
SWROGA  
DIRECTORS

Manuel Aybar  
NEWSLETTER EDITOR  
GNTOS WEBMASTER

Linda Horton  
PAST PRESIDENT

## March Speaker: Building a Greenhouse!

Bruce Bradham is giving a program on greenhouse construction.

Bruce is a probationary judge at the Dallas Judging Center, has been growing orchids for about 10 years, and doing construction work in the metroplex for 25 years. He has constructed 20 or so greenhouses over the years, of which 4 were for himself. He is still using three of them.

Our speaker has an extensive collection of dendrobium species, but also grows a lot of the cattleya alliance. He admits, along with many of us, that what he really grows is survivors.

If you would like to know more about greenhouse construction in the Metroplex, then you cant miss this talk!

## Inside this issue:

President's Message	2
What's in a name?	3
Last Meeting Minutes	4
Treasurer's report	6
The Orchid Information Corner	7

## Greater North Texas Orchid Society

The GNTOS was formed in 1954 as a result of the amalgamation of the Dallas Orchid Society and the North Texas Orchid Society. The new organization was formed as a nucleus for a larger an potentially greater Society with an enthusiastic membership. On March 19, 1954, they were issued a charter by the AOS as the Greater North Texas Orchid Society

## Meeting Information

Meetings are held on the first Friday of each month at the Texas A&M Extension Campus Pavilion Building, 17360 Coit Road, Dallas, TX. The doors open at 6:30 pm for set up followed by mingling and meeting / program.

## Newsletter

Members are encouraged to submit articles, information, or suggestions for publication in our Newsletter. Send submissions to the editor via email at: [manuel.aybar@verizon.net](mailto:manuel.aybar@verizon.net) or by mail to Manuel Aybar, 2330 Saharah dr, Garland, TX 75044

## President's Message by Tom McIntosh

The aim of the monthly plant raffle is two fold. Be self supporting. Raise money for the many expenses necessary to the operation of an orchid society. Just trying to be self-supporting has been difficult at times, since the raffle ticket sales have not always equaled the cost of the plants.

Bill Williamson had a great recommendation, which has been in effect for two months now. Each month GNTOS members donate nice divisions from their greenhouses to the monthly plant raffle. In this way, the society no longer has a monthly expense for raffle plants, and every ticket sale is profit. This also puts a piece of your good plants in circulation, so, in the event that you should lose your plant, a backup is available to replace your lost plant. Bill contracted to deliver two plants each month and already has donated 24 plants to the raffle. Jean Whiting and Kathy Halverson have also donated plants. In addition, I am sure that some anonymous donors have also placed plants on the raffle table.

We want to say thank you to our generous contributors, and to ask that as spring repotting time approaches, you will remember GNTOS and make a few divisions for our raffle table. When you donate plants to the raffle you are helping to balance the budget. You are also keeping a division of your prized plant available if you later need to beg a division from the new owner. You are also making more room in your growing area for new plants. Just think of all the vendors who are coming to the big show in May.

We may at times have sufficient plants available for the raffle, and unless the donor designates otherwise, we may place a few 'raffle' plants on the Snoopers' Paradise Table. The total price of these plants is added to the raffle tickets proceeds.

Glenda has begun a new column, The Orchid Information Corner, with the new orchid grower in mind. If you are in need of answers to your questions, please send us an e-mail. We will try to help you as soon as possible.

I had promised that you would see the new roster by May. I am sending it to you via E-mail. Please check you data and send me any corrections that need to be made. Tom

## WHAT'S IN A NAME? By Glenda McIntosh

**Subfamily:** *Vandoideae*

**Tribe:** *Maxillarieae*

**Subtribe:** *Oncidiinae*

**Genus:** *Hispaniella* Braem

**Species:** *henekenii* (Schomburgk ex Lindley) Braem

**Pronunciation:** his-PAN-ee-ell-ah hen-ee-KEN-ee-eye

**Synonym:** *Oncidium henekenii* Schomburgk ex Lindley

**Etymology:** The genus name honors the West Indian island of Hispaniola to which this plant is endemic. John Lindley did not explain his dedication when he described *Oncidium henekenii* in *Folia Orchidacea* *Oncidium* in 1855.

**Taxonomy:** This species never fit very well in *Oncidium*, and when the equitant species were moved to the genus *Tolumnia*, it certainly did not fit that generic description. Therefore, Guido Braem Ph.D. in 1980 established the monotypic genus *Hispaniella* to meet the unique characters of this small, hairy, bee-like flower. When the plant is out of flower, it has been mistaken for *Oncidium variegata*, but only when the dried zigzag rachis is not attached. The flower lip of *Hispaniella henekenii* resembles a female bee and by this mimicry entices a male bee to try to mate with it thus ensuring the survival of the species by a method known as pseudocopulation.

**Plant description:** This is a very small epiphyte with a slender, creeping rhizome; **stems** leafy, very short; **leaves** distichous, laterally compressed, falcate, elliptic-lanceolate, acute, 1.5-5.0 cm L, 0.5-1.0 cm W, erose margins; **inflorescence** erect to arching, unbranched, few flowers, to 30.0 cm long, rachis zigzag; **flowers** produced in succession, bee-like, sepals and petals off-yellow, bases flushed purple, lip dark maroon with yellow apical margin; **callus** orange; **sepals and petals** oblong-obovate, obtuse, 4-5.0 mm L, 1.5-2.0 mm W, reflexed backward from lip; **lip** convex, obscurely 3-lobed to entire, emarginate, 11.0-13.0 mm L, 8.0-10.0 mm W, pubescent; **callus** at base of column subquadrate, flesh, pubescent, with 3-5 elongate, tapering, hairy protuberances in front; **column** 2.5-3.0 mm long; **column wings** short, linear, pale green.

**Habitat:** In the past, this species was also found in Haiti, but it is now found only in the Dominican Republic. Even here, the species is very rare, as most of *Hispaniella henekenii*'s range has been taken over for agriculture. It is important to remember that in its natural habitat, *H. henekenii* grows in dry, subtropical forest and desert regions in the southwest part of the Caribbean Island of Hispaniola.

**Culture:** To grow this species, you must mount it either on a twig or a small branch, and hang it under minimum shade, and mist it daily. This plant is easily killed by too much kindness, so do not be tempted to water it heavily. Remember that in nature, it relies on scarce rain falls and dews to provide moisture.



## GNTOS Meeting Minutes By Jeanne Staser

Friday, February 10, 2007

President Tom MacIntosh brought the meeting to order.

Old business - none

New business

Tom asked everybody to check their information in the roster to make sure that names, addresses, phone numbers and emails were correct.

Dottie Hermann announced the refreshment/meal plan for the upcoming show in Arlington. Instead of individuals bringing food we are asking for cash donations to cover catering services. Please contribute.

Linda Horton announced the Saturday, February 10th Workshop at the same location as the evening's meeting. Speakers scheduled were Tom Mullen and Norito Hasegawa.

Hank Horton talked about the Arlington show in May and commented that we need clerks to assist with the ribbon judging, at least 70 to complement the number of judges expected. A sign-up sheet was passed around - we need volunteers between 8 am and noon.

Linda Horton gave a very informative

talk, particularly relevant to growers here in Texas, on Miltonias and their intergeneric hybrids, focusing on those that can grow well here in our area.

Khan Tran was assisted with the plant table judging by Charles Hess, Glenn Pate and Jim Williams. The awards were:

Blue Ribbon: *Dendrochilum arachnites* - the Hortons - 3 points

Red Ribbon: *Epidendrum Cosmo Dream Color* x Pacific Rose (my apologies, I neglected to get this owner's name) - 2 points

White Ribbon: *Paph. St. Swithen* - the Hortons - 1 point

Tri-Color Ribbon: *Cattleya Angel Bells 'Susie'* AM/AOS - Bruce Bradham - 1 point

Species of the Month: *Phal parishii* - Khan Tran - 1 point

We welcomed 2 new members, Cheryl Hlad and May Lorfing. We also had 3 visitors, Thomas and Mary Standard, and Priscilla Denis.

Meeting adjourned

Respectfully submitted

Jeanne Staser, recording secretary

## DALLAS JUDGING CENTER By Nancy Cropp

Regular monthly Judging was held in conjunction with a judging Workshop at Texas A & M, Dallas. 38 judges were in attendance, along with 11 non-judge attendees. Programs were presented by Tom Mulhollan on judging Neofinetia's and by Norito Hasegawa on judging Paphiopedilums. Funds for the Judging Center were raised with a Silent Auction and a "Lively" Auction.

Six teams considered 17 plants, and three awards were given:

- Phal. Haur Jin Princess 'Texas Red' (Haur Jin Diamond x Dou-dii Golden Princess) HCC 76 points, owner: Peter Lin, Irving
- Phal. Haur Jin Princess 'OK Peppered' (Haur Jin Diamond x Dou-dii Golden Princess) HCC 77 points, owner: Orchid Konnection, Dallas
- Rdc. Maple Spice 'Suzanne' (Tolu. Maple Dancer x Rod. Spicy Gold) HCC 79 points, owner: Bill Williamson, Plano

## MAY AOS SHOW COUNTDOWN By Ronnie Brandenburg

The AOS National Show is fast approaching! For information about the show, click on the official web site: <http://www.aosdfw2007.org>

We still need more volunteers from Wednesday thru Sunday (May 2-6) so please check your calendars before the meeting, if possible bring your calendar. A sign-up sheet will be available at the next meetings. If you won't be at the meeting, call Ronnie at 972-279-4075 to sign up. As a reminder, volunteers have free parking at the Arlington Convention Center and free admission to the show and sales area.

Also, we are giving a lot of trophies at this show -- some of them donated by SWROGA, IPA, Slipper Alliance, individuals, etc. However, if anyone would like to donate monies for a trophy, we need sponsors for the nine first-bloomed seedling classes which cost \$25 each. Or they could donate money for a Best Flower or Best Grown Plant trophy which cost \$75 each. Your name would be listed in the program as a trophy donor and the trophy that they give would contain a "Donated by" line on the card that is placed by the trophy during the show.

The two ladies who are in charge of the Hospitality suite could really use help with food or beverages or money donations. They are Melissa Garrett from Fort Worth and Hilda Kicinski in Dallas. We will be feeding the exhibitors and vendors and volunteers for six days so that means we must have a lot of food.

## Treasurer's Report by Kathy Halverson

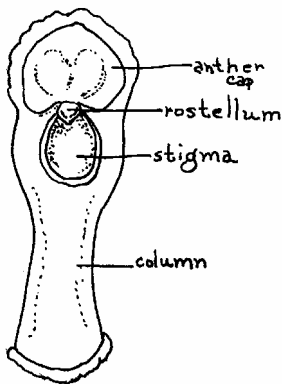
<b>Financial Report: Feb. 2007</b>		
Dated: 2-05-07		
<b>Beginning Balance: \$5164.93</b>		
	<b>Income</b>	<b>Expenses</b>
<b>Dues</b>	\$150.00	
<b>Hospitality</b>		
<b>Raffle</b>	\$136.00	
<b>Rent</b>		\$120.00
<b>Snoopers</b>	\$77.00	\$
<b>Speakers Fee/Honorarium</b>		
<b>Speakers Air Fare/Travel</b>		
<b>Miscellaneous</b>		Business Envelops: \$2.49
<b>Donations</b>	\$15.00	
<b>Special Sales: Ruth Wright</b>	\$75.00	
<b>SWROGA Dues</b>		\$228.00
<b>Auction</b>		
<b>October 2007 Orchid Show</b>		Insurance: \$50.00
<b>Plant Table Yr End Awards</b>		
<b>Hospitality Room (AOS)</b>	\$5.00	
<b>DFW AOS Show</b>		Rent: Arlington Convention Ctr. \$3450.00
<b>Bank Fee Reversal</b>	\$14.00	
<b>Subtotals:</b>	<b>\$472.00</b>	<b>\$3850.49</b>
<b>Ending Balance: \$1786.44</b>		

## The Orchid Information Corner by Glenda McIntosh

### What is an Orchid?

The number of orchid species is estimated to be between 25,000 and 35,000 which means that the Orchid Family is the most numerous of all the families. This means that one out of every ten blooming plants that you see is an orchid! So, how do you identify an orchid? Various taxonomists say that among the various characteristics common to the Orchid Family an individual species must have three of them. Orchids share a number of features with the other monocots such as scattered vascular bundles, parallel leaf venation, flower parts in threes, an inferior ovary, and no annual growth rings. The number of distinct orchid characteristics is placed between five and seven depending on which taxonomist authority you read. However, they all agree that an orchid must have three of these characters to qualify as an orchid.

An orchid has numerous **fine seeds** that contain little except the embryo. There is no endosperm in the seed, which indicates that the embryo needs to be nourished until it is established. This means that the seed must grow in contact with the appropriate fungal strain to provide it with carbohydrates and mineral nutrients.



Most orchids have only one fertile stamen (Apostasioideae have three and Cyripedioideae have two). The stamen are located on one side of the flower instead of being arranged symmetrically. An orchid has evolved a unique reproductive system combining the male and female characteristics into one organ called the gynandrium or the **column**. The column is a fusion of the anthers and stigmatic surfaces.

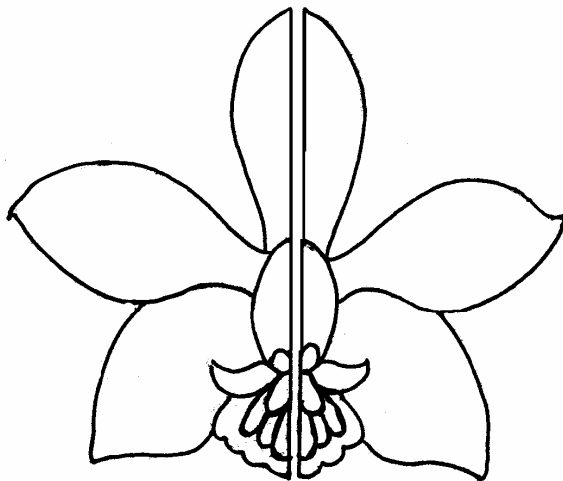
Most orchids have an anther at or near the top of the column. A removable anther cap tops the anther. Under the cap are the pollen masses called the **pollinia**.

The female productive surface of the column called the stigma is a shallow area on the inner side of the column designed to receive the pollinia. The stigma is divided into three parts.

One of those parts is modified in most orchids to form a flap between the pollinia and the stigma. This flap called the **rostellum** serves two purposes. First, it keeps the pollinia separated from the stigmatic surface to prevent self-pollination and to insure cross-pollination. Secondly, it secretes a sticky substance, which attaches the pollinia to the pollinating vector.

Orchid flowers are frequently **zygomorphic** (irregular) which can be divided to produce two equal halves along any plane through the center of the flower.

Most orchid flowers go through a process known as **resupination** as they develop. Resupination is the process of twisting so that the lip of the flower is on the lower side under the column. Those flowers, which do not twist, appear to be upside down or nonresupinate.



ZYGOMORPHIC  
FLOWER

The inferior ovary is at the apex of the flower stalk beneath the point of flower attachment. The lower whorl of segments called the calyx consists of three sepals. The dorsal sepal is frequently different from the two lateral sepals, which may or maynot be partially fused. The upper whorl of three segments called the corona consists of the petals, two of which lie on opposite sides of the dorsal sepal. The third petal is usually modified to form a larger more elaborate segment, which is frequently frilly, and more brightly colored than the two petals. The third modified petal is known as the **labellum** or lip and it serves as the landing platform for the pollinating vector.

## GNTOS 2007 BUDGET By Tom McIntosh

## 2007 GNTOS Budget: Proposed/Actuals

<b>Income:</b>	<b>Proposed:</b>	<b>Actual:</b>
2007 Membership Dues	\$1,100.00	\$400.00
Auction	\$2,200.00	
Raffle Ticket Sales	\$1,000.00	
Special Sales	\$0.00	
Snooper's Paradise	\$1,000.00	
GNTOS 2007 Show	\$3,000.00	
<b>Total:</b>	<b>\$8,300.00</b>	<b>\$400.00</b>
<b>Expenses:</b>		
AOS SHOW	\$200.00	
Bank Fee	\$100.00	
Dallas Judging Center	\$200.00	
GNTOS 2007 Show	\$2,675.00	
Library: Periodicals	\$200.00	
Miscellaneous Office Supplies	\$200.00	
Newsletter	\$225.00	
Raffle Plants	\$300.00	
Refreshment Supplies	\$100.00	
Rent	\$1,440.00	
Show Displays	\$3,200.00	
Snooper's Paradise	\$35.00	
Speakers	\$200.00	
Special Sales	\$0.00	
SWROGA	\$228.00	
SWROGA Show Trophies	\$70.00	
Web Site	\$190.00	
Year End Plant Table Awards	\$150.00	
Yearbook	\$100.00	
<b>Total:</b>	<b>\$9,813.00</b>	<b>\$0.00</b>

## Ask the Plant Groom™ By Dale Groom

What can I use to get rid of clover in my yard? - M. M.

Clovers and other broad leaf plants including chickweed and henbit along with cool season annual grasses, rescue grass and annual bluegrass are only in our landscapes, lawns and gardens during this time of the year. They ... leave when it gets hot.

One approach to managing a current crop of these "guests" is low mowing. Utilizing a walk behind or rider mower set a notch or two below their normal mowing heights with sharp blade(s) on this equipment will remove nearly all existing top growth. It is often difficult for these plant tops to regrow sufficiently before our warm weather arrives.

The best weed control for annual weeds in any lawn is to grow a thick healthy vigorous lawn. Lawns that are open or thin allow weed seed the opportunity to reach the soil, germinate and establish themselves. A thick turf prevents this opportunity.

The second best venue to prevent annual uninvited plant guests in our lawns is the selection and properly timing the applications of weed preventers. These should be applied in Sept. for cool/cold season and now for spring/summer weed prevention in the lawn.

During 2007, Dr. Jim McAfee, Associate Professor, Extension Turfgrass Specialist, Texas Cooperative Extension, Texas A & M University System recommends ... no application to St. Augustine lawns with any pre-emergent due to their weak conditions brought about the weather's impact on the plantings.

If you do decide to apply a weed preventer of any type this spring be sure to read and follow label directions. The best weed preventer in all gardens is to prepare them using EARTH-KIND(tm) techniques including 3-4" of shredded tree trimmings or bark as mulch and maintain this depth year round throughout the beds.

More information on turf management is available at <http://dallas-tx.tamu.edu/>, click on Horticulture, Links then <http://aggieturf.tamu.edu/>

Additional information on EARTH-KIND(tm) is available at: <http://dallas-tx.tamu.edu/> click on Horticulture, Links then <http://aggie-horticulture.tamu.edu/tamuhort.html> and the Earth-Kind logo.

Master Gardeners are available to assist you free with horticultural issues live M - F, 8:30am - 4pm at 214-904-3053.

Dale's Notes:

- \* Transplant woody ornamentals ... now.
- \* Conduct an irrigation audit on your sprinkler system prior to spring use.
- \* In 2007 design or contact a landscape designer to design WaterWise color beds prior to preparing and planting
- \* Now is onion transplants, English/sweet peas, cole crops including broccoli, cabbage and Brussels sprouts transplants and white potato starts planting time
- \* Prior to installing new color (annual or perennial), herb, ornamentals and/or roses be sure to utilize the EARTH-KIND(tm) program principles in bed preparation
- \* Now is time to prune modern roses
- \* I know it's not pretty or fun but it is also gutter cleaning time.
- \* This is THE time to plant fruit trees, grape or blackberry plants and pecan trees

Dale Groom, Extension Horticulturist, Master Gardener Program Coordinator-Dallas County, Texas Cooperative Extension, Texas A & M University System, Native Texan, Columnist, Author, Radio/TV Host is also known state wide as The Plant Groom(tm). You may send your horticultural issues including lawns, gardens and landscapes to Dale at [dalegroom@mycvc.net](mailto:dalegroom@mycvc.net)

GREATER NORTH  
TEXAS ORCHID  
SOCIETY  
VOLUME 53, ISSUE 3  
MARCH 2007

Tom McIntosh  
President  
116224 Tuscany Way  
Dallas, TX

GNTOS MEMBER  
Your address and number  
Your City, Your State

### GNTOS 2007 Membership Dues

It is time to begin thinking about your 2007 GNTOS Membership Dues. Yearly dues are due by January 31, 2007 in order for your name to be listed in the published roster.

New or Renewing Member \$20.00 (first person in household)

Additional member \$10.00 (each additional person in same household)

Please circle member status, provide your name, address, phone number, and email in the blanks below. Please mail completed form with payment to:

Kathy Halverson, 1922 Baylor Dr., Richardson, TX 75081

New Member

Renewing Member

Name: \_\_\_\_\_

Name: \_\_\_\_\_

Address: \_\_\_\_\_

\_\_\_\_\_

City: \_\_\_\_\_

Phone: \_\_\_\_\_

Email: \_\_\_\_\_

Email: \_\_\_\_\_

We are on the Web!  
[www.gntos.org](http://www.gntos.org)